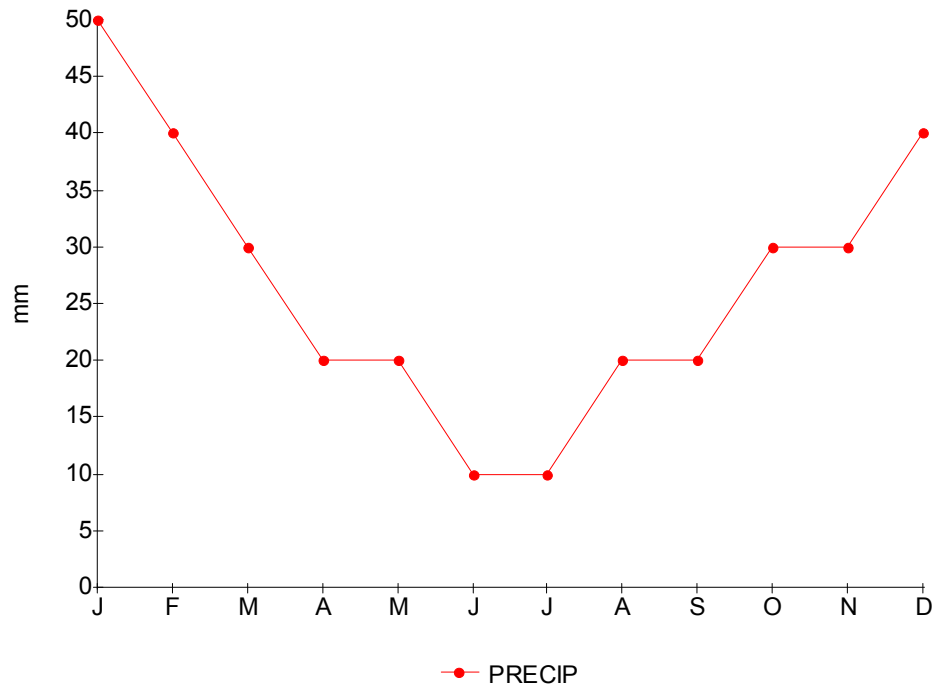
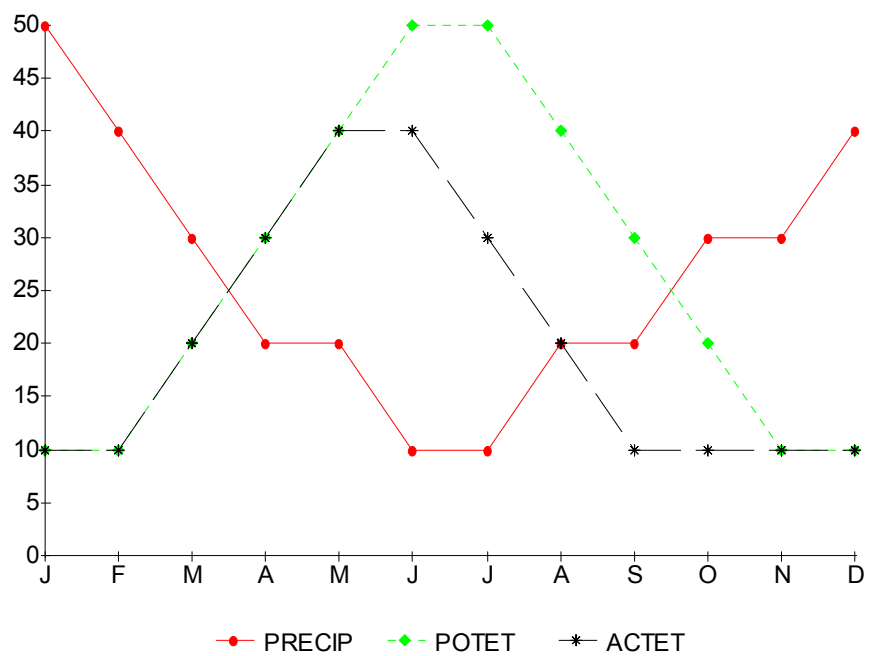


### Graphing PRECIP, POTET, and ACTET

We can now graph PRECIP simply by plotting the values for each month on a graph and joining the dots:



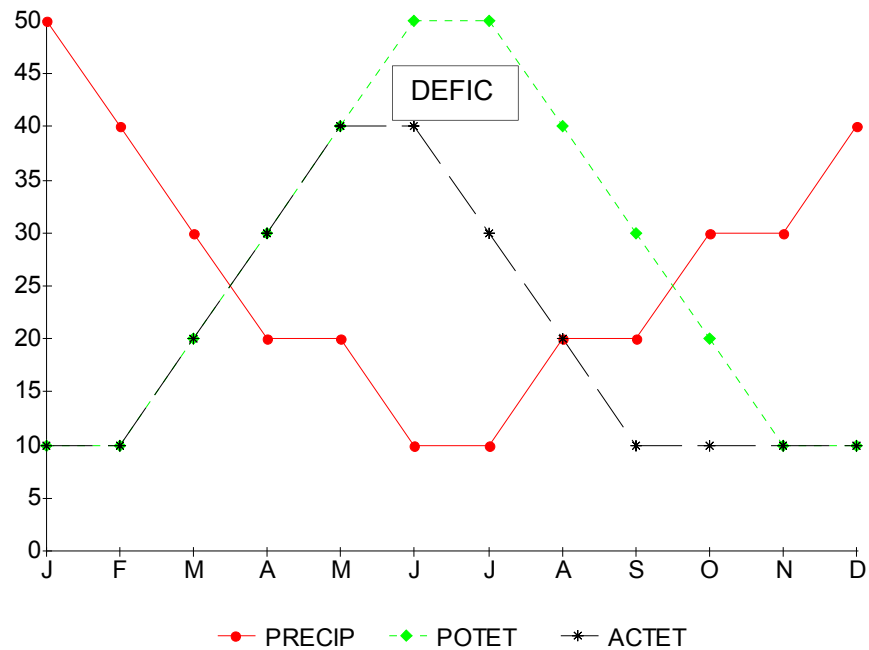
We can also add POTET and ACTET by plotting their values for each month and joining the lines:



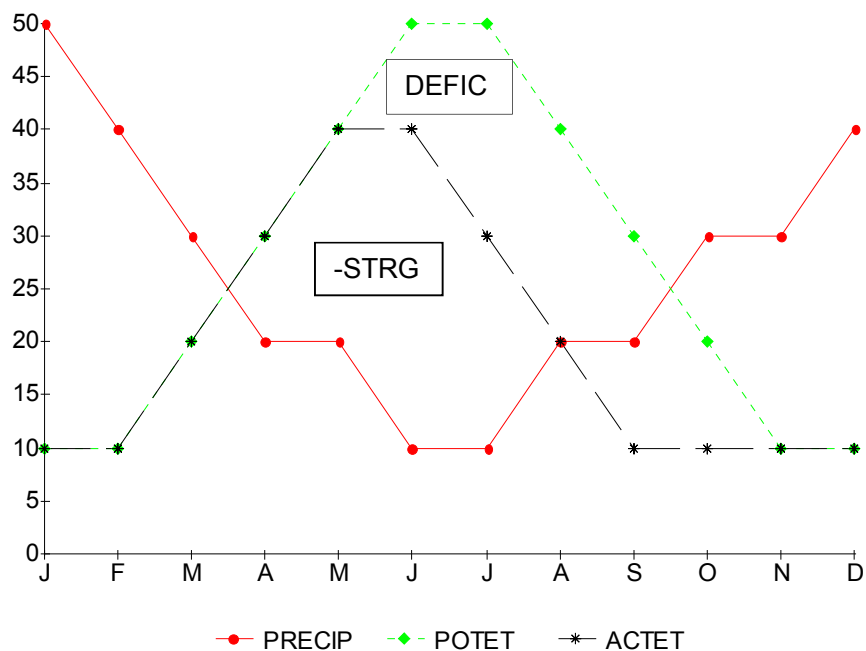
## B. Graphing DEFIC, -STRG, +STRG, SRPL

Only PRECIP, POTET and ACTET are graphed as **lines**. DEFIC, -STRG, +STRG and SRPL are graphed as **areas under the curves** on the graphs.

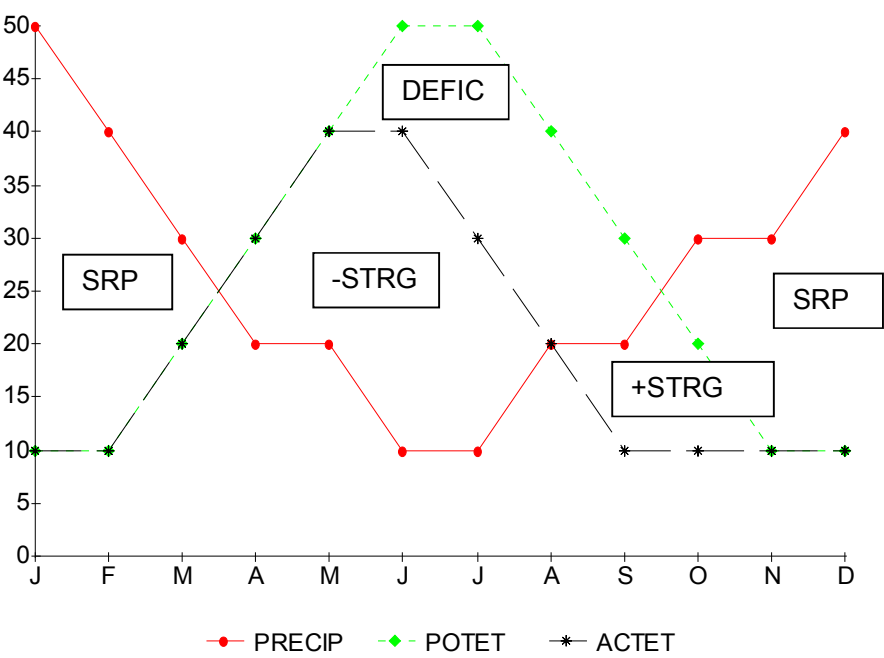
Remember that **DEFIC** is POTET – ACTET. It is the area between the POTET line and the ACTET line:



Remember  $-STRG = ACTET - PRECIP$ .



Remember, when PRECIP-ACTET it is +STRG until the end of December, then SRPL:



DONE!